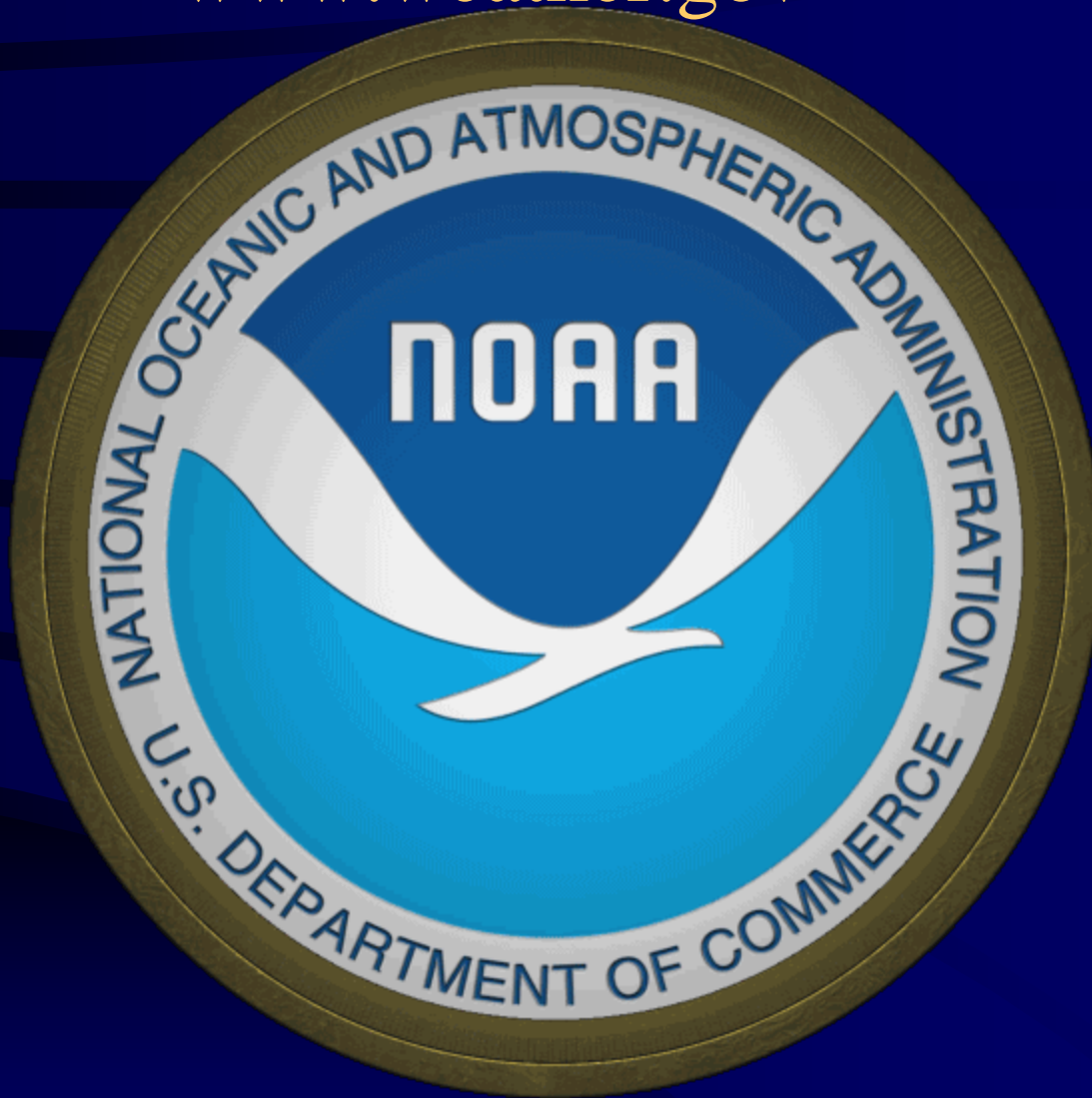


NOAA's National Weather Service

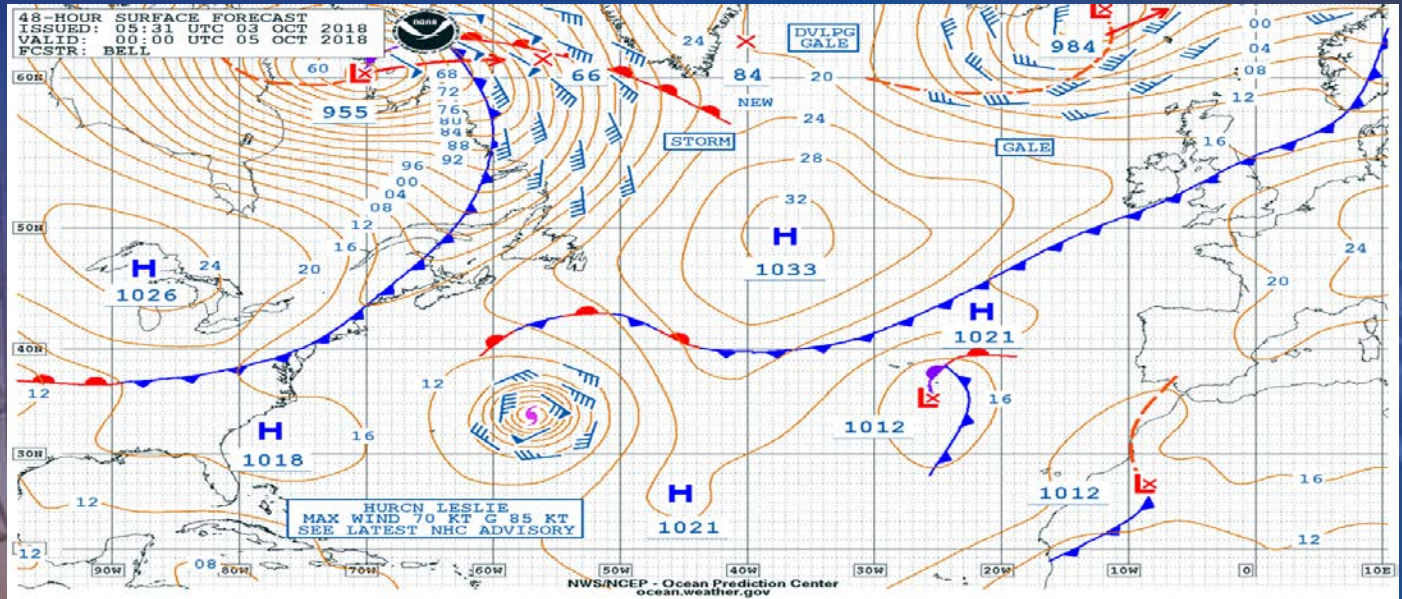
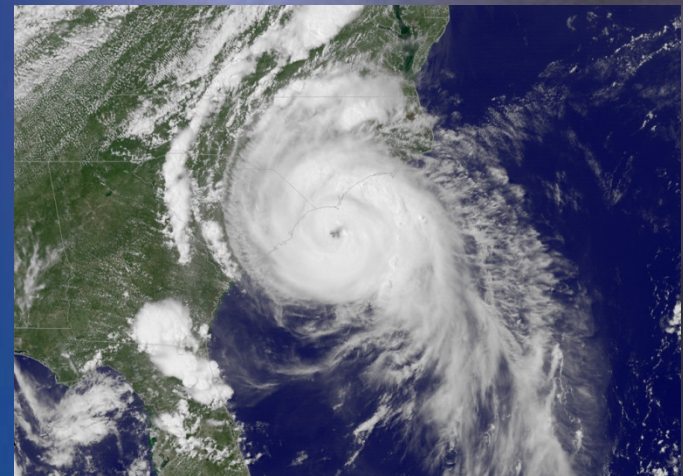
[www.weather.gov](http://www.weather.gov)



Annapolis Boat Show  
Industry Day October 4, 2018



# NOAA/National Weather Service Marine, Tropical and Tsunami Services

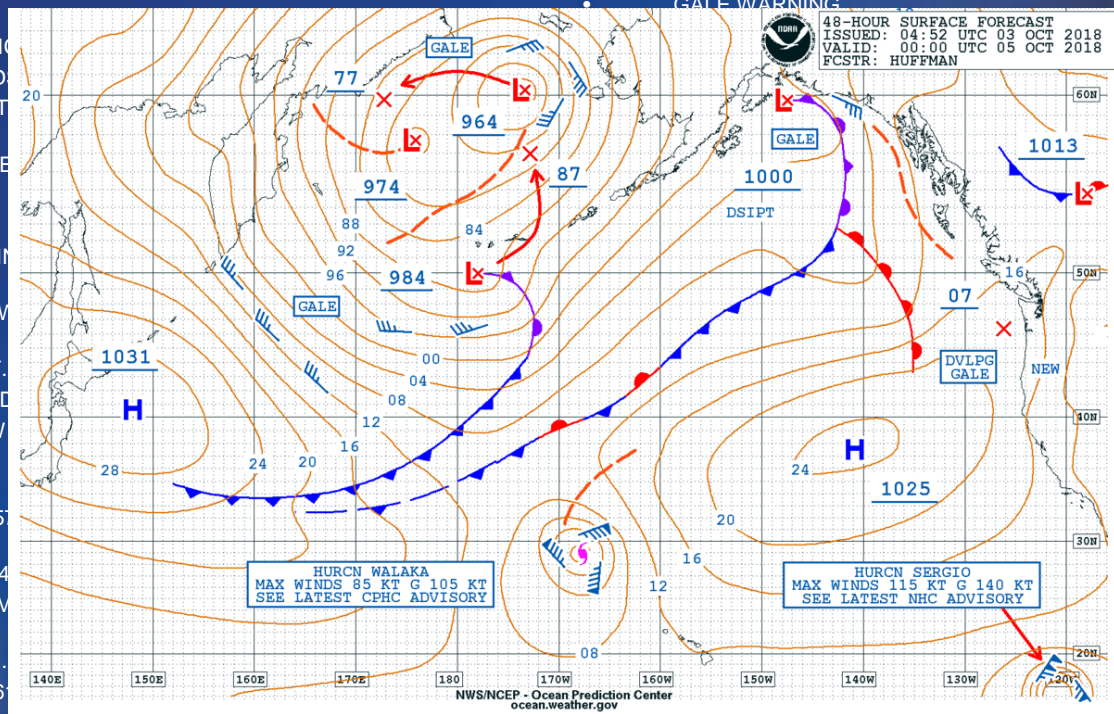




# High Seas Forecast – 1 Hurricane, 1 Storm, and 3 Gales.

- ...HURRICANE WARNING...
- 48 HOUR FORECAST HURRICANE WALAKA NEAR 29.9N 167.4W. MAXIMUM
- SUSTAINED WINDS 80 KT GUSTS 100 KT. TROPICAL STORM FORCE WINDS
- WITHIN 140 NM NE QUADRANT...130 NM SE QUADRANT...70 NM SW QUADRANT...AND 100 NM NW QUADRANT. SEAS 12 FT OR GREATER OVER
- FORECAST WATERS FROM 30N TO 38N BETWEEN 157W AND 174W WITH SEAS
- TO 37 FT. ELSEWHERE OVER FORECAST WATERS FROM 30N TO 35N BETWEEN
- 158W AND 171W WINDS 20 TO 33 KT. SEAS 11 TO 25 FT.
- .72 HOUR FORECAST TROPICAL STORM WALAKA NEAR 33.5N 165.0W. MAXIMUM SUSTAINED WINDS 60 KT GUSTS 75 KT.
- EXTENDED OUTLOOK...USE FOR GUIDANCE ONLY...ERRORS MAY BE LARGE.
- .96 HOUR FORECAST TROPICAL STORM WALAKA NEAR 33.5N 165.0W. MAXIMUM SUSTAINED WINDS 60 KT GUSTS 75 KT.
- .120 HOUR FORECAST POST TROPICAL STORM WALAKA NEAR 33.5N 165.0W. MAXIMUM SUSTAINED WINDS 60 KT GUSTS 75 KT.
- 146.0W. MAXIMUM SUSTAINED WINDS 60 KT GUSTS 75 KT.
- ...STORM WARNING...
- .LOW 56N175E 953 MB MOVING WEST AT 10 KTS. OVER FORECAST WATERS WITHIN 140 NM NE QUADRANT...130 NM SE QUADRANT...70 NM SW QUADRANT...AND 100 NM NW QUADRANT. SEAS 12 FT OR GREATER OVER
- FORECAST WATERS FROM 30N TO 38N BETWEEN 157W AND 174W WITH SEAS
- TO 37 FT. ELSEWHERE OVER FORECAST WATERS FROM 30N TO 35N BETWEEN
- 158W AND 171W WINDS 20 TO 33 KT. SEAS 11 TO 25 FT.
- .72 HOUR FORECAST TROPICAL STORM WALAKA NEAR 33.5N 165.0W. MAXIMUM SUSTAINED WINDS 60 KT GUSTS 75 KT.
- EXTENDED OUTLOOK...USE FOR GUIDANCE ONLY...ERRORS MAY BE LARGE.
- .96 HOUR FORECAST TROPICAL STORM WALAKA NEAR 33.5N 165.0W. MAXIMUM SUSTAINED WINDS 60 KT GUSTS 75 KT.
- .120 HOUR FORECAST POST TROPICAL STORM WALAKA NEAR 33.5N 165.0W. MAXIMUM SUSTAINED WINDS 60 KT GUSTS 75 KT.
- 146.0W. MAXIMUM SUSTAINED WINDS 60 KT GUSTS 75 KT.

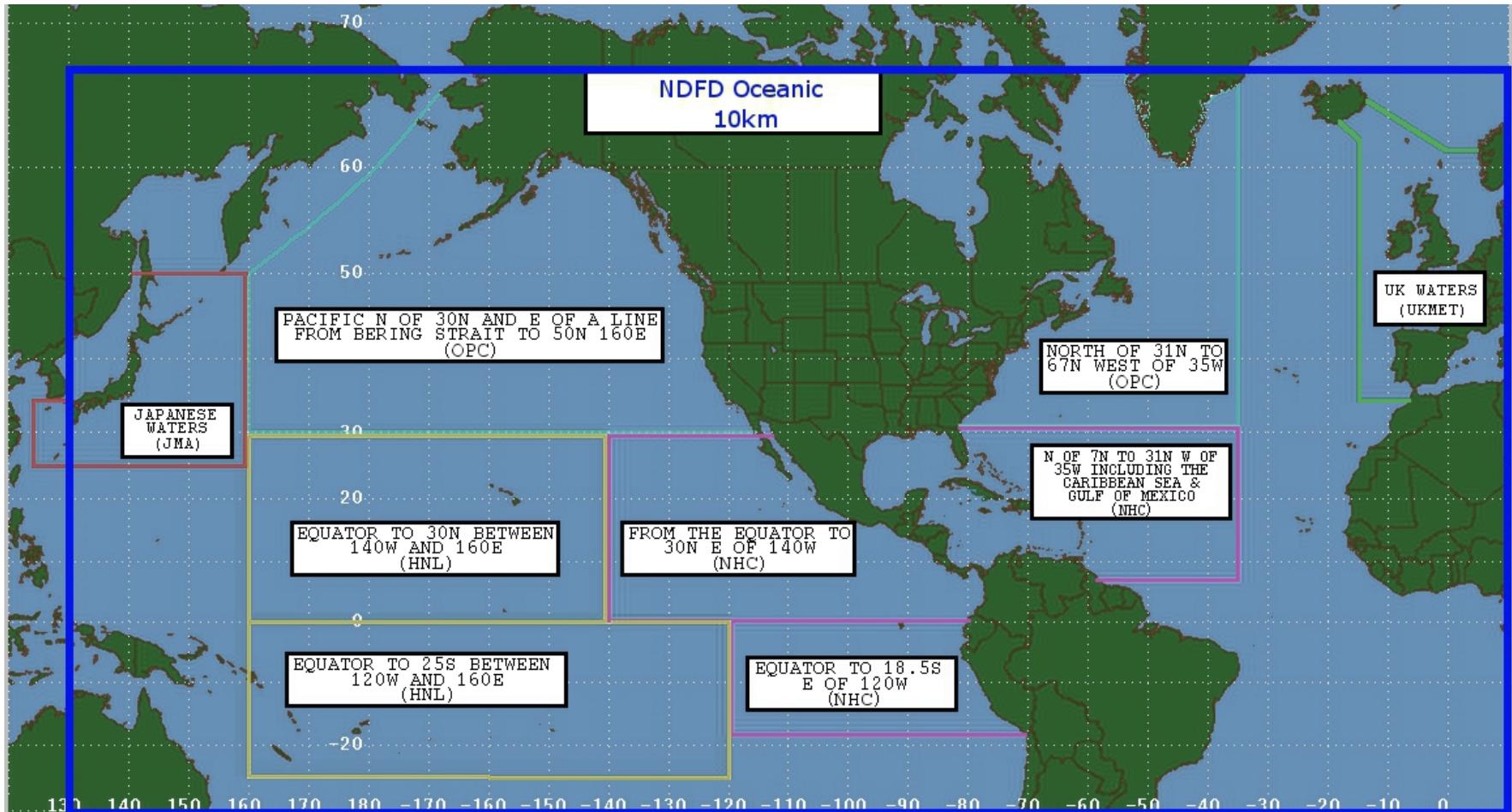
- ...GALE WARNING...
- .LOW 31N170W 1006 MB NEARLY STATIONARY. OVER FORECAST WATERS
- WITHIN 420 NM SW AND 360 NM NW QUADRANTS WINDS 25 TO 35 KT. SEAS
- 9 TO 17 FT. ELSEWHERE WITHIN 360 NM E AND SE QUADRANTS WINDS 20
- TO 30 KT. SEAS TO 11 FT.
- .24 HOUR FORECAST LOW 31N171W 1010 MB. FROM 30N TO 37N BETWEEN
- 164W AND 176E WINDS TO 25 KT. SEAS 8 TO 13 FT.
- .48 HOUR FORECAST LOW DISSIPATED AND CONDITIONS ABSORBED BY
- HURRICANE WALAKA DESCRIBED ABOVE.



- OVER FORECAST
- WINDS 25 TO 35 KT. SEAS 9 TO
- WITHIN 420 NM SE
- EN 160E AND 180W WINDS
- 38N TO 52N BETWEEN
- TO 14 FT.
- 2 MB. OVER FORECAST
- 300 NM E OF A FRONT TO
- N153W WINDS 20 TO 30
- S. N OF A LINE FROM THE
- 35 KT. SEAS TO 11 FT.
- S. WITHIN 180 NM SE AND
- NM N AND NE QUADRANTS WINDS 25 TO 35 KT. SEAS TO 11 FT.



# Marine areas of the National Weather Service





UNITED STATES DEPARTMENT OF COMMERCE  
NATIONAL OCEANIC AND  
ATMOSPHERIC ADMINISTRATION



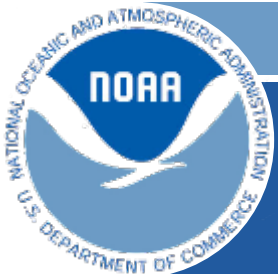
# NOAA's National Weather Service Marine Forecasts Website

<http://weather.gov/marine>

or

<http://www.nws.noaa.gov/om/marine/home.htm>

AFS26: Marine, Tropical, and Tsunami Services Branch



## Weather.gov/marine main page

Clicking on the map takes you to links to all NWS marine forecast offices and national centers.

### Sections:

- ✓ Items of Interest to Mariners
- ✓ Marine Text Forecasts and Products
- ✓ Graphic Marine Forecasts and Products
- ✓ Observations
- ✓ Marine Weather Portals
- ✓ Dissemination Information



# Main Page

NOAA's National Weather Service

## Marine Forecasts

Marine Forecasts Home

News

Organization

Search



Landlubber's forecast:

"City, St" or zip code (Pan/Zoom for Marine)

- NWS Home
- Parent Office
- Marine, Tropical, and Tsunami Services Branch

Items of Interest  
Marine Forecasts  
Text, Graphic

Observations  
Portals

Dissemination  
Publications

Links  
FAQ  
Contacts  
Feedback

Vote  
Great, Good, Poor

Be Prepared!  
Weather Safety  
Cold Water

### National Weather Service Marine Forecasts

[www.weather.gov/marine](http://www.weather.gov/marine)



**IF YOU EXPERIENCE A YELLOW BACKGROUND WHEN OPENING ANY OF THESE PAGES, REFRESH YOUR BROWSER AND NORMAL COLOR SHOULD RETURN**

CLICK ON THE MAP for links to Marine Forecast Offices and Centers. Clicking on an office/center of interest will take you to their webpage where you will find regionally focused information.

[What is a "Marine Zone Forecast"?](#)

[What is a "Marine Point Forecast"?](#)

[Want to learn more about the National Weather Service?](#)

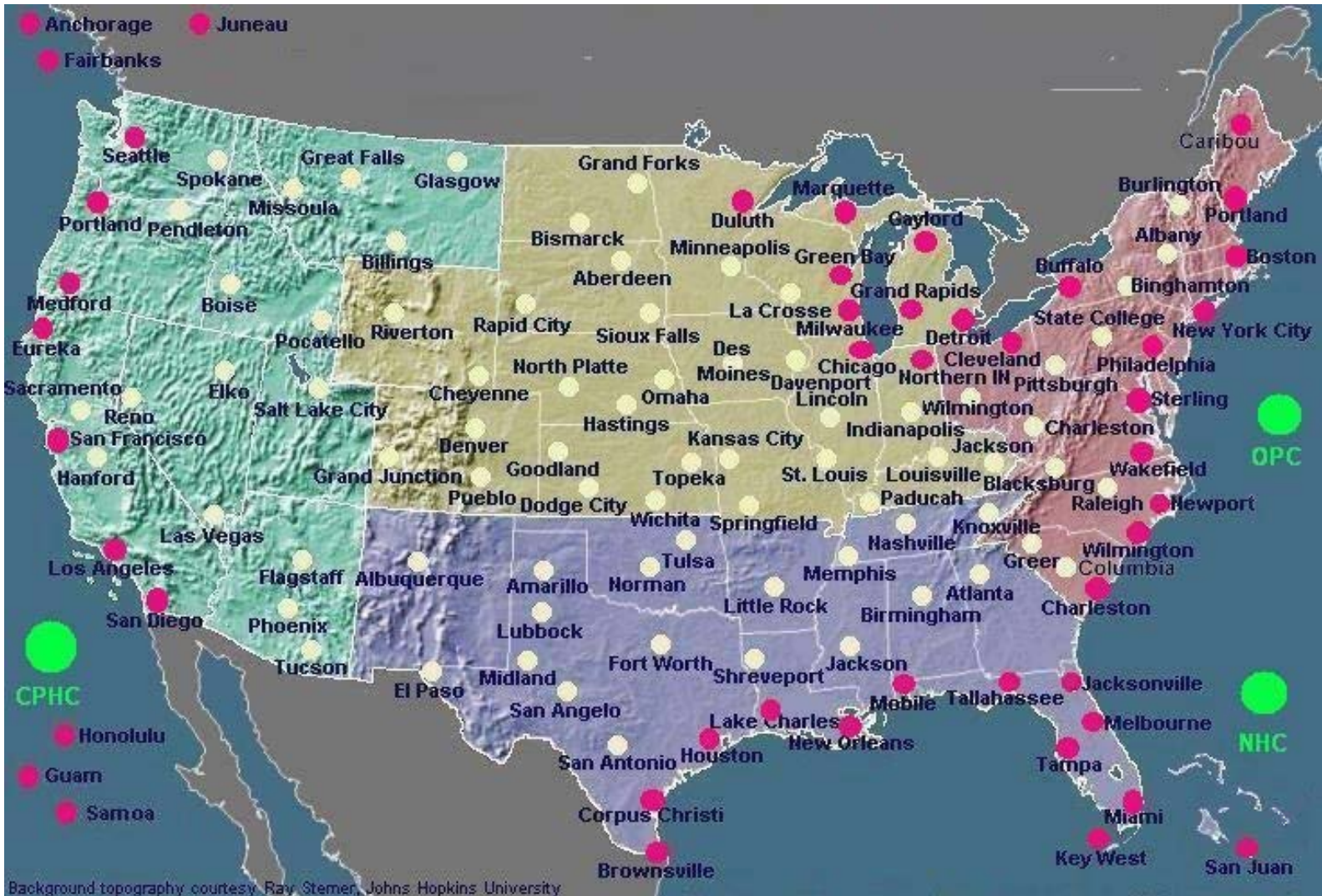
Did you know that the height of some individual waves may be twice the height of the forecast seas? And may present an even greater danger near shore or any shallow waters?

### Items of Interest to Mariners

- The Tropics in the Atlantic are heating up. Click here for the latest from the National Hurricane Center**
- New Radiofax broadcast schedules for Boston, Pt. Reyes and Kodiak beginning 9/19/18**  
Service Change Notice
- Recent and Upcoming Changes to Marine Forecasts and Services**
- 72 hour forecast charts available via FTPmail and Web OPC** 72 hour Forecast Graphics
- Attention Safetynet Users** InMarsat satellite migration plans during 2018
- Attention OPC Website Users!** OPC website URL address changing September 26, 2017
- ATTENTION FTPMAIL USERS!** New e-mail address for using the FTPmail service
- EFFECTIVE MARCH 7, 2017, Cell.weather.gov discontinued. Use Marine Cell Pages Termination Notice**
- New Cold Water Hazards and Safety Webpage**
- Going to the Beach? Check out the Experimental Beach Forecast Page.**



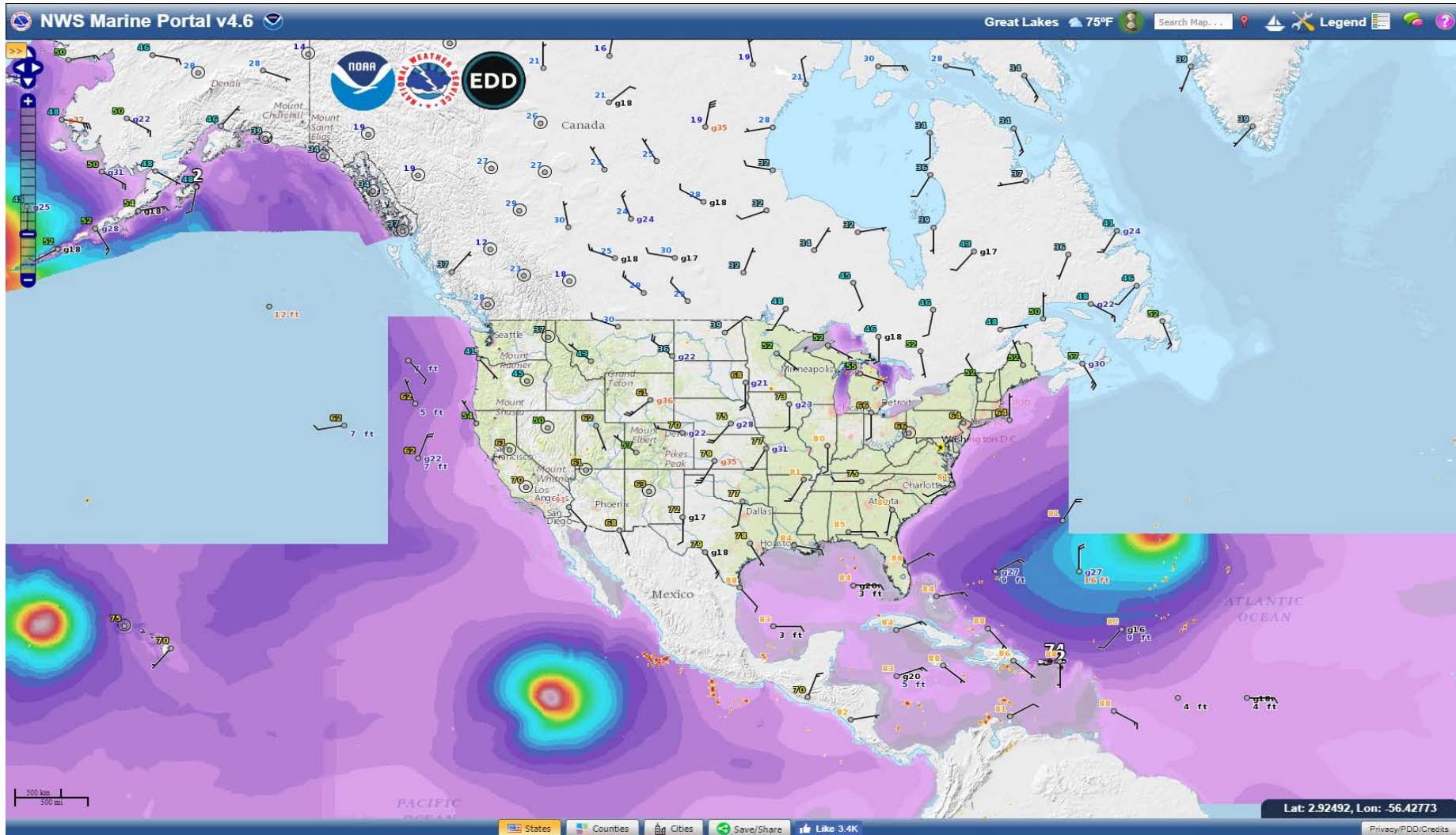
# NWS Weather Forecast offices







# The National Digital Forecast Database is expanding over the Ocean area





# Usage Statistics

- ✓ Users most often visit between 8 am and 4 pm for about 1 minute and 30 seconds
- ✓ Site typically gets between 260K and 270K users per month and about 640K sessions
- ✓ Most visited pages are the home page, point and click pages and the text forecast pages
- ✓ About 55% use a desktop to access, 35% use mobile device and 10% use a tablet



## Items of Interest to Mariners

- ✓ Links to recent and important changes in the marine, tropical and tsunami programs along with safety information, and a chance to provide feedback
  
- ✓ Link to FAQs,
  - ✓ The most often referenced FAQ is number 3, which provides information on ftpmail
  - ✓ Ftpmail is a system where you can request and receive weather information via email. Handy where internet is not available



# Marine Text Forecasts and Products

- ✓ Links to point and click and simple text forecasts issued by the NWS. These include coastal, offshore and high seas products.
- ✓ Low speed friendly link to text forecasts, <http://www.nws.noaa.gov/om/marine/textzones.htm>



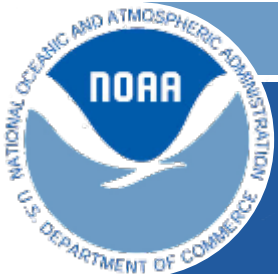
# Graphic Marine Forecasts and Products

- ✓ Links to the very popular Radiofax Charts, <http://tgftp.nws.noaa.gov/fax/marine.shtml>.
  - ✓ All of the radiofax products produced by the NWS can be viewed in this section.
- ✓ Link to National Digital Forecast Database products <https://graphical.weather.gov/>



## Observations and Weather Portals

- ✓ **Observations** - links to the National Data Buoy Center <https://www.ndbc.noaa.gov/>
- ✓ **Marine Weather Portals** - link to NOAA's NOWCOAST a 1 stop shop for NWS marine products. <https://nowcoast.noaa.gov/mariner.html>
- ✓ **Dissemination Information** - has overviews of all the ways marine weather information is disseminated



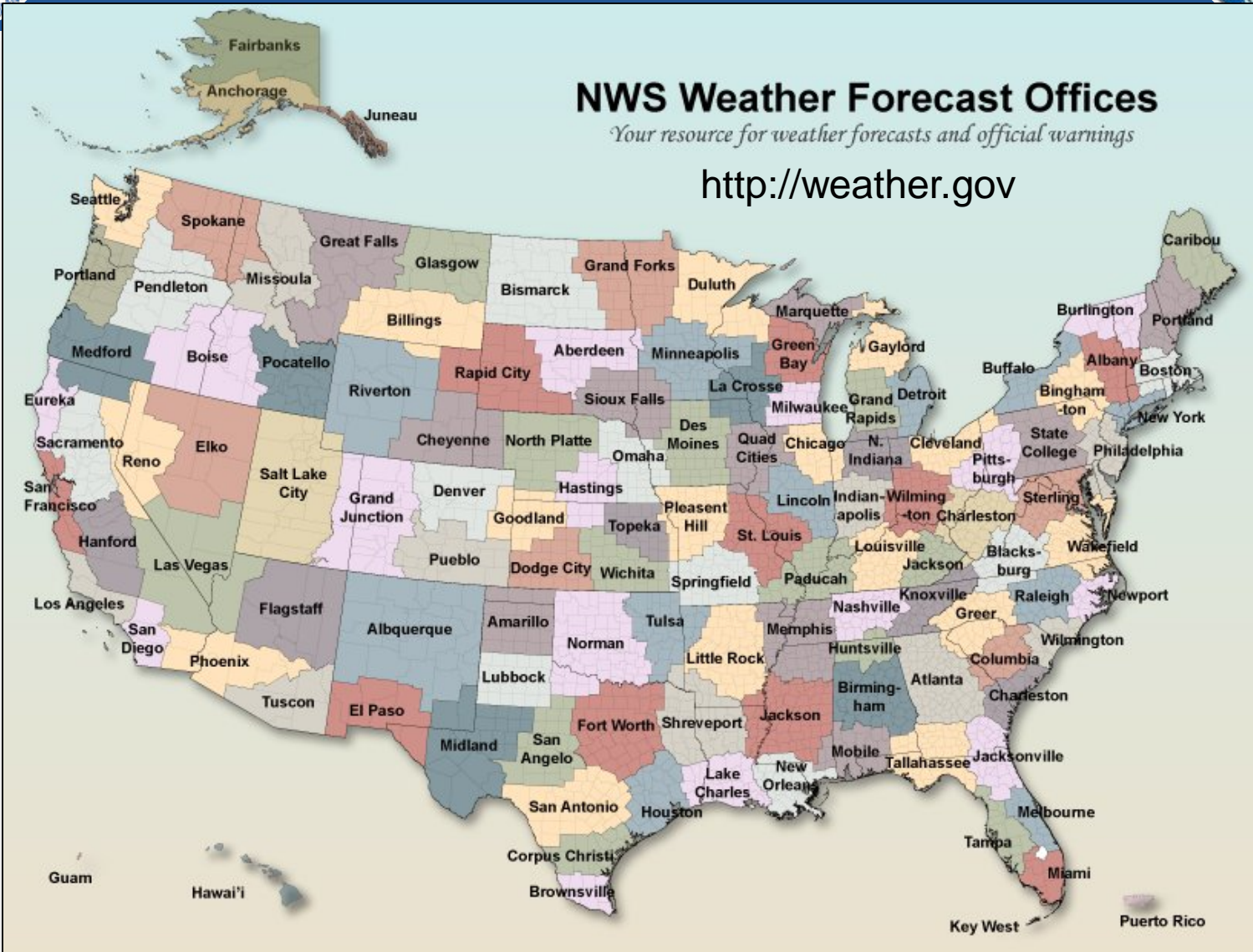
# Questions?

Questions and comments about the Marine Forecasts website and NWS marine, tropical and tsunami services can be emailed to [marine.weather@noaa.gov](mailto:marine.weather@noaa.gov).

- ✓ This email address is monitored during regular business hours and not 24/7



# Local Weather Forecast Offices







# We are the National Weather Service

<https://youtu.be/lqgtk4ozgsg>

