

NOAA Custom Charts (Prototype)

Leland Snyder

NOAA Industry Day
Annapolis, Maryland
October 4, 2018

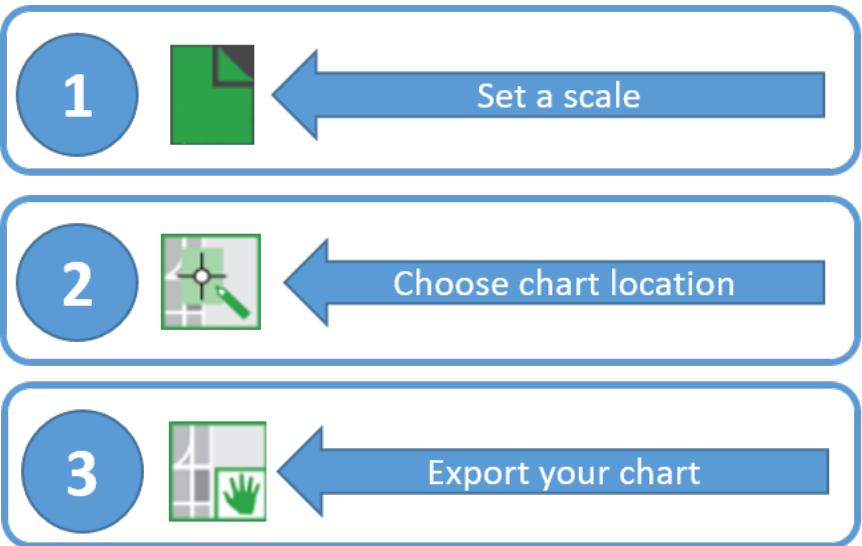


Office of Coast Survey
National Oceanic and Atmospheric Administration

NOAA Custom Chart

The NOAA Custom Chart tool is a prototype that will allow boaters to create a customized chart in three easy steps!

- Set a scale
- Choose chart location
- Export



NOAA Custom Chart

The tool outputs a customized raster (PDF) chart generated from ENC data

- Uses NOAA electronic navigational chart ([NOAA ENC®](#)) database of chart products
- Contains surround elements of a chart
 - Neatline and coordinate grid
 - Scale bar
 - Compass rose
 - Notes
- Currently can choose “traditional” or “simplified” ECDIS symbology
- Future versions will include full paper chart symbology as an option
- Create a paper or digital back-up for using on board



NOAA Custom Chart

Technology leverages Esri web services integrated into a web application

- NOAA ENCOOnline map service
- Geoprocessing services for data export and print to pdf
- Settings (ECDIS display parameters) based off of JavaScript Object Notation (JSON) accessed through ArcGIS Server REST API

```
▼ Query String Parameters view source view URL encoded
dpi: 96
transparent: true
format: jpeg
frames_on: false
bbox: -8537322.131117577,4688325.286586455,-8486759.036907,4730480.307685672
bboxSR: {"wkid":102100}
size: 1323,1103
f: image
display_params: {"ECDISParameters":{"version":"10.6","DynamicParameters":{"Parameter":[{"name":"AreaSymbolizationType","value":2},{"name":"AttDesc","value":1},{"name":"ColorScheme","value":0},{"name":"CompassRose","value":1},{"name":"DataQuality","value":1},{"name":"DeepContour","value":30},{"name":"DisplayCategory","value":"1,2,4"}, {"name":"DisplayDepthUnits","value":2}, {"name":"DisplayFrames","value":3}, {"name":"DisplayFrameText","value":0}, {"name":"DisplayFrameTextPlacement","value":1}, {"name":"DisplayNOBJNM","value":2}, {"name":"HonorScamion","value":2}, {"name":"IntendedUsage","value":"0"}, {"name":"IsolatedDangers","value":1}, {"name":"LabelContours","value":1}, {"name":"LabelSafetyContours","value":1}, {"name":"OptionalDeepSoundings","value":1}, {"name":"PointSymbolizationType","value":2}, {"name":"SafetyContour","value":10}, {"name":"ShallowContour","value":2}, {"name":"ShallowDepthPattern","value":1}, {"name":"TwoDepthShades","value":1}], "ParameterGroup":[{"name":"TextGroups","Parameter":[{"name":"11","value":2}, {"name":"21","value":2}, {"name":"23","value":2}, {"name":"24","value":2}, {"name":"25","value":2}, {"name":"26","value":2}, {"name":"27","value":2}, {"name":"28","value":2}, {"name":"29","value":2}, {"name":"30","value":2}]}]}}}
layers: show:0,1,2,3,4,5,6,7
```



NOAA Custom Chart

Define the custom chart product

- Select scale – default is 1:25000
- Select Page size
- Select Orientation

1 Define custom chart product

Click “define a product” icon



Enter product settings

Product Description	Produces a map by adjusting the ground area based on provided scale and page size.
Export Format	<input type="text" value="GeoPDF"/>
Scale	<input type="text" value="25000"/>
Page Size	<input type="text" value="ANSI D (22in x 34in)"/>
Orientation	<input type="text" value="Portrait"/>

Select: format (only GeoPDF currently)
chart scale
paper size
chart orientation




NOAA Custom Chart

Set custom chart extent


- Click on map where center of extent will be
- Move extent to adjust location

2 Create custom chart extent


Click "create a new extent" icon




Zoom in and out of the map



Left click and hold to pan




Left click and release to set center of custom chart

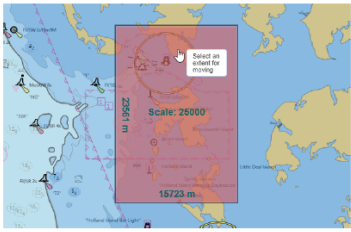


3 Modify custom chart extent

Click "move a custom extent" icon



Left click and hold to move custom extent



NOAA Custom Chart

Adjust chart settings

- Use the Setting to adjust:
 - Text groups
 - Color scheme
 - Depth units
 - Label contours

4

Change chart features

Click “change display” button



Toggle between tabs to change how features are depicted

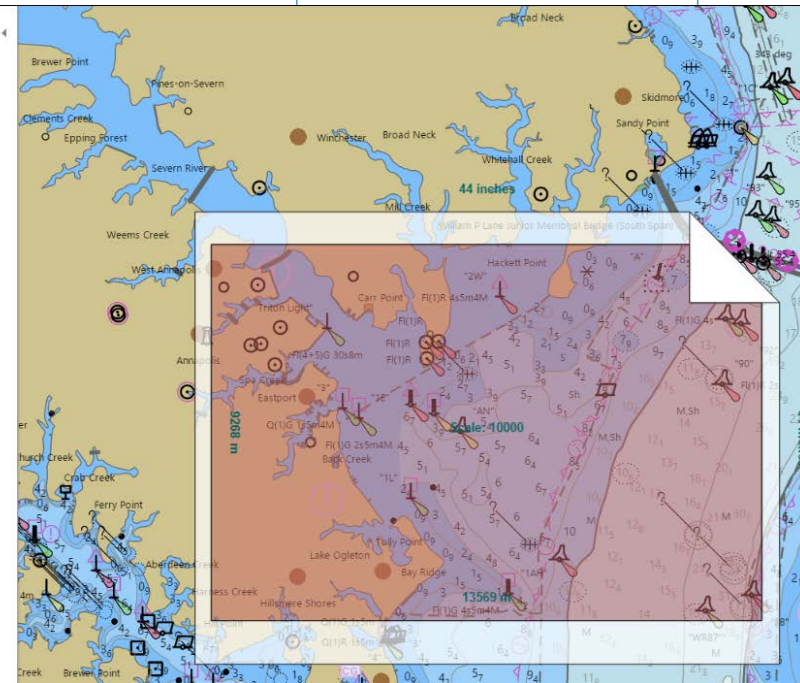
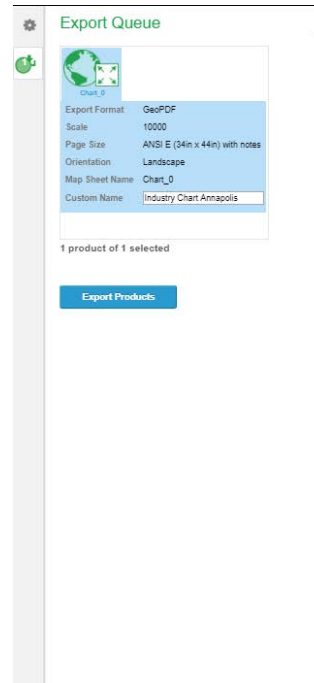
Depth Contour (Meters)	Miscellaneous
Shallow: <input type="text" value="2"/>	
Safety: <input type="text" value="10"/>	
Deep: <input type="text" value="30"/>	
<input type="button" value="Apply"/>	



NOAA Custom Chart

Export chart

- Select the chart:
 - Verify information
 - Set custom name



5 Export

Click "export products" button

1

Select a chart to export in the Export Queue

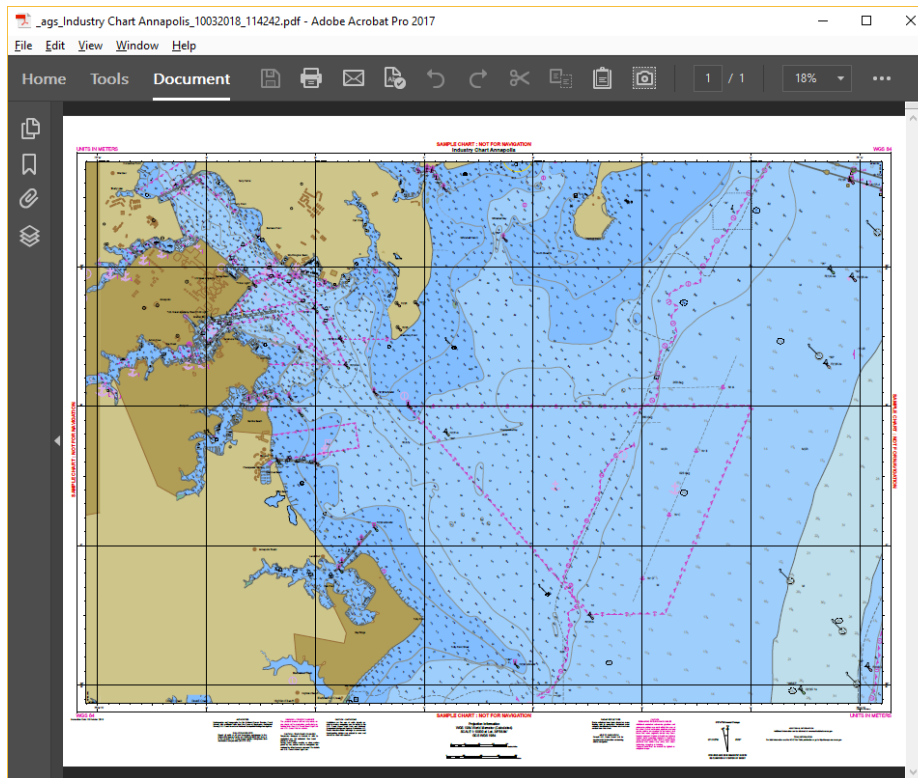
Chart_0



NOAA Custom Chart

Download and open chart

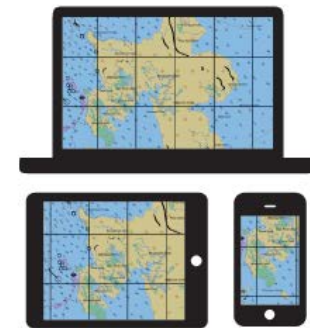
- Click link to open pdf link



6

Download

Right click on link, open chart in new tab, and enjoy!!



NOAA Custom Chart

- Feedback
 - Tell us your ideas for improving the new tool through [NOAA's Nautical Inquiry & Comment System](https://ocsddata.ncd.noaa.gov/idrs/inquiry.aspx?frompage=C-POD) (<https://ocsddata.ncd.noaa.gov/idrs/inquiry.aspx?frompage=C-POD>)
- OR-
- For more information contact Colby.Harmon@noaa.gov and MeiLing.Freeman@noaa.gov
- Read more and explore the tool
 - <https://noaacoastsurvey.wordpress.com/2018/04/11/online-noaa-custom-chart-lets-boaters-create-their-own-charts/>
 - <https://nauticalcharts.noaa.gov/charts/custom-chart.html>

