

Office of Coast Survey

Aimed Stakeholder Interaction & Survey Tool

ASIST



Aimed Stakeholder Interaction and Survey Tool - ASIST

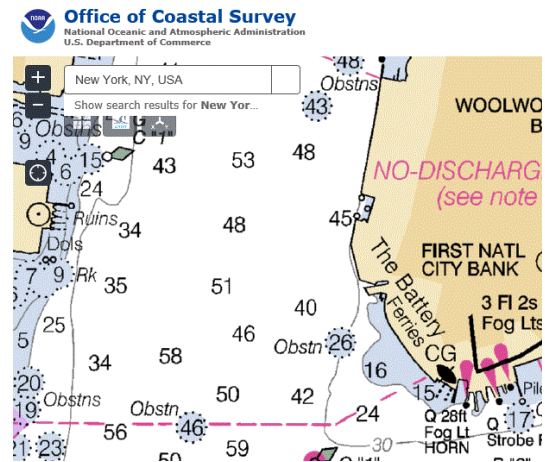
How may we ASIST you today?

EMAIL ADD A LOCATION

VERIFY EMAIL ATTACH A FILE

DESCRIBE THE ISSUE WHAT TYPE OF USER ARE YOU?

Submit



Description

ASIST is a replacement to the current Inquiry Discrepancy Management System (IDMS) that allows for data collection, mining, with an improved user interface for both internal and external customers. ASIST will include discrepancy management, with the addition ability to gather customer surveys which have the potential to be used as a replacement to the annual customer survey.

Coming Enhancements

- ✓ Added geospatial component
- ✓ Customizable external customer survey
- ✓ Improved backend query capability
- ✓ Improved customer interaction
- ✓ Improved interface for smart phones
- ✓ Ensure the quality of the nautical charting products

Problems, Questions, or Comments

[Submit an Inquiry](#)

Report a Chart, Coast Pilot, or Website Discrepancy

[Discrepancy Reporting](#)

Projected Release Date
January 2018

Developed within
Coast Survey Development Laboratory

Office of Coast Survey
National Oceanic and Atmospheric Administration