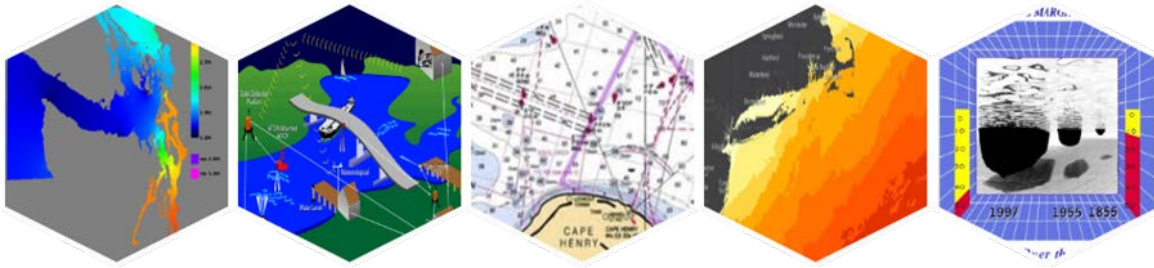


# Visualizing Model Data for Mariners



## Introduction

The Coastal Marine Modeling Branch produces models known as Operational Forecast Systems (OFS) for the U.S. seaports, estuaries, Great Lakes, and the coastal oceans. OFS' are run routinely and output parameters such as water levels, surface currents, sea surface temperature and salinity. We are working to make model data available in user-friendly formats such as GRIB to developers and manufacturers.

## Activities and Goals

- Produce OFS Model Data in Useable Format (netCDF, GRIB, HDF5)
- Investigating Robust Communications and Data Transfer Protocols
- Follow International Standards and Specifications
- Develop Prototypes Through Third Party Collaborations

## Contact

Dr. Neil D. Weston      240-847-8250      [neil.d.weston@noaa.gov](mailto:neil.d.weston@noaa.gov)

Dr. Kurt Hess      240-847-8239      [kurt.hess@noaa.gov](mailto:kurt.hess@noaa.gov)