



What is a NOAA RespondersChart?



The **NOAA RespondersChart™** is a tool for oil spill response, hurricane recovery, search and rescue, homeland security, and other incidents where the nautical chart is a natural tool for planning, coordinating, or sharing information. Responders can download these charts, digitally annotate them with incident-specific information, and then print copies, or distribute electronic copies via e-mail or by posting for use on the Internet.

NOAA RespondersCharts are provided for free, in Adobe PDF format at www.NauticalCharts.gov/RespondersChart. Commenting and annotating usage rights have been enabled. **Adobe Reader 7.0 or later is required** to use the commenting and annotating functionality. Adobe Reader is free at www.Adobe.com.

RespondersCharts have been reduced in size to 11" by 17" so as to be printable on a wide variety of printers. Because of the severe reduction in scale, detailed information is difficult to read. Use full scale NOAA nautical charts for navigation.

Tips for Commenting and Annotating

Pictures and text can be **Cut** and **Pasted** directly from an authoring package such as Microsoft Word. Try it to see how it behaves.

Use the menu items **Tools -> Drawing Markup -> TextBox** or **CallOut** to insert boxes for text. Then type or cut and paste text into the boxes.

Highlight a TextBox or CallOut, right click on your mouse, and select **Properties** to change the fill color and border of the item.

Use the menu items **Tools -> Commenting -> Stamps** to replace the "Revised" stamp with one containing the current date.

Use the menu items **Tools -> Drawing Markup -> Line, Polygon Line, Polygon Tool**, etc. to draw on the chart. Add explanations of your additions with the **Tools -> Drawing Markup -> CallOuts**.

Use the menu items **Help -> Complete Help** to learn all about the commenting and annotating tools available in Adobe Reader.

Tips for Printing

Use the menu item **File -> Print -> Name** to select your printer. Then select **Properties** to perform the detailed setup.

Set the **paper size** to 11"x17", and the **orientation** to "portrait."

To print the charts with your markups, choose **Document With Stamps** or **Document With Markups** from the **Comments and Forms** pop-up menu in the **Print** dialog box.

Set the other options for your printer, such as setting "Page Scaling" to "None," indicating which tray has 11"x17" paper, and the number of copies.

If your printer can print 2-sided, find the checkbox for that feature, and check it. If not, select "print odd pages" then reinsert the paper and select "print even pages" to get 2-sided printing.

If you do use 2-sided printing, the additional settings **Booklet Layout, Left Edge Binding, 2 pages/sheet** gives the most convenient combination of front and back side orientations.

Place your incident-specific information here.

Use the Adobe Reader 7.0 or later commenting tools.

REVISED

1:12 pm, Aug 24, 2006

RespondersChart

Delaware Bay – Smyrna River to Wilmington
(NOAA Chart 12311)

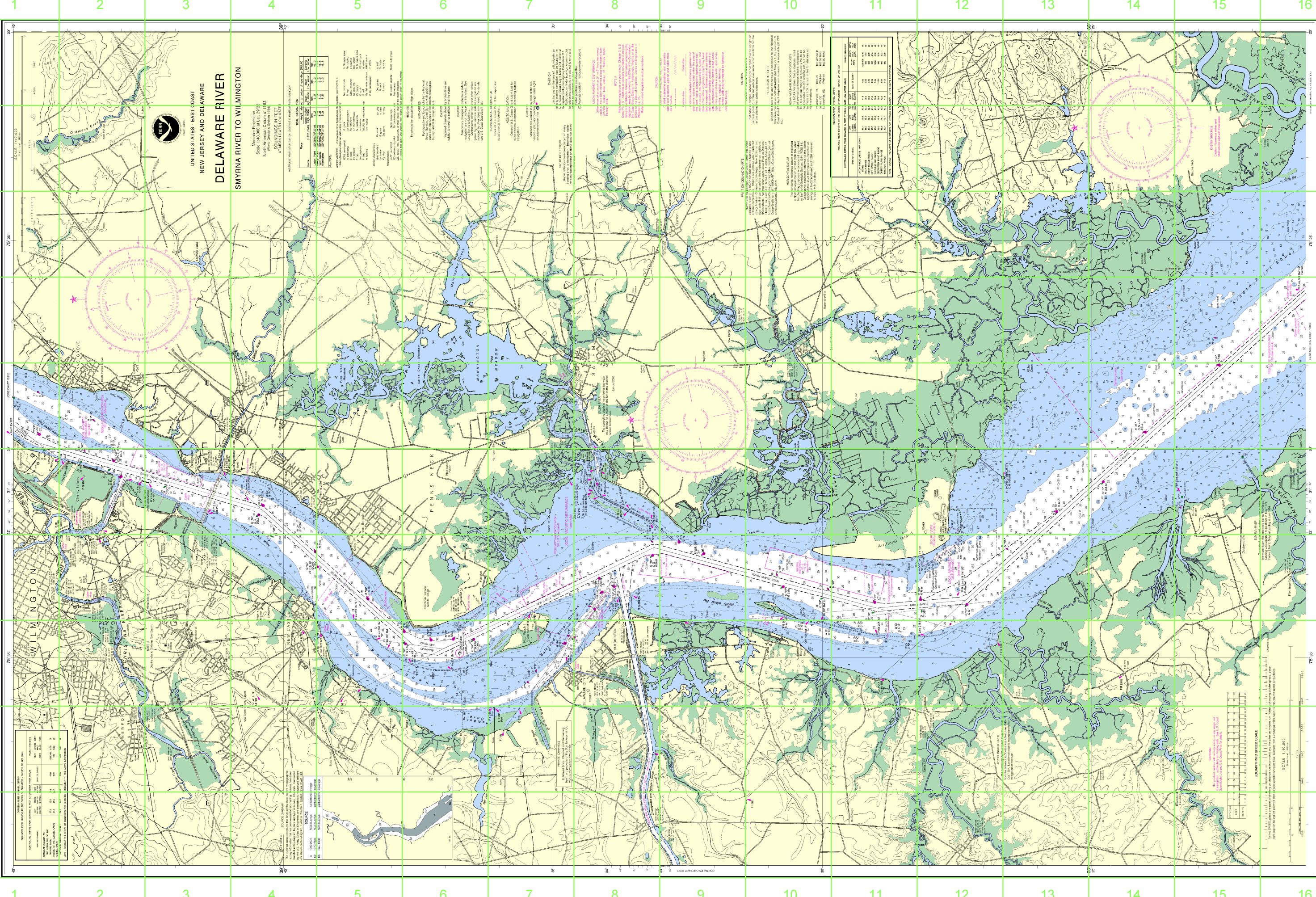


A miniaturized NOAA nautical chart for incident response planning and mangement. Use the full size NOAA chart for navigation.

- Annotate Using Tools in Adobe Reader 7.0
- PDF Format Prints on most printers
- Convenient 11"x17" Size
- Post on the Internet
- Compiled by NOAA, the Nation's Chartmaker.



National Oceanic and Atmospheric Administration
National Ocean Service
Office of Coast Survey
www.NauticalCharts.NOAA.gov
1-301-713-2770



GENERAL NOTE: THIS CHART IS THE PROPERTY OF THE OFFICE OF COAST SURVEY, NATIONAL OCEANIC AND ATMOSPHERIC ADMINISTRATION, U.S. DEPARTMENT OF COMMERCE. IT IS LOANED TO YOU FOR YOUR CONVENIENCE AND IS NOT TO BE REPRODUCED OR TRANSMITTED IN ANY FORM OR BY ANY MEANS, ELECTRONIC OR MECHANICAL, INCLUDING PHOTOCOPYING, RECORDING, OR BY ANY INFORMATION STORAGE AND RETRIEVAL SYSTEM, WITHOUT THE EXPRESS WRITTEN PERMISSION OF THE OFFICE OF COAST SURVEY. THE USER ASSUMES ALL LIABILITY FOR THE USE OF THIS CHART. THE USER SHALL INDEMNIFY AND HOLD HARMLESS THE OFFICE OF COAST SURVEY FROM AND AGAINST ALL CLAIMS, DAMAGES, LOSSES, AND EXPENSES, INCLUDING REASONABLE ATTORNEY'S FEES, ARISING OUT OF OR RESULTING FROM THE USE OF THIS CHART.

CAUTION: THIS CHART IS NOT TO BE USED FOR NAVIGATION UNLESS IT IS USED IN CONJUNCTION WITH THE LATEST EDITIONS OF THE SAILING DIRECTIONS, PUBLISHED BY THE OFFICE OF COAST SURVEY. THE USER SHALL BE RESPONSIBLE FOR DETERMINING THE CORRECT COURSE AND POSITION AT ALL TIMES. THE USER SHALL BE RESPONSIBLE FOR DETERMINING THE CORRECT TIME AND PLACE FOR THE USE OF THIS CHART. THE USER SHALL BE RESPONSIBLE FOR DETERMINING THE CORRECT COURSE AND POSITION AT ALL TIMES. THE USER SHALL BE RESPONSIBLE FOR DETERMINING THE CORRECT TIME AND PLACE FOR THE USE OF THIS CHART.

NOTES: 1. THIS CHART IS THE PROPERTY OF THE OFFICE OF COAST SURVEY, NATIONAL OCEANIC AND ATMOSPHERIC ADMINISTRATION, U.S. DEPARTMENT OF COMMERCE. IT IS LOANED TO YOU FOR YOUR CONVENIENCE AND IS NOT TO BE REPRODUCED OR TRANSMITTED IN ANY FORM OR BY ANY MEANS, ELECTRONIC OR MECHANICAL, INCLUDING PHOTOCOPYING, RECORDING, OR BY ANY INFORMATION STORAGE AND RETRIEVAL SYSTEM, WITHOUT THE EXPRESS WRITTEN PERMISSION OF THE OFFICE OF COAST SURVEY. THE USER ASSUMES ALL LIABILITY FOR THE USE OF THIS CHART. THE USER SHALL INDEMNIFY AND HOLD HARMLESS THE OFFICE OF COAST SURVEY FROM AND AGAINST ALL CLAIMS, DAMAGES, LOSSES, AND EXPENSES, INCLUDING REASONABLE ATTORNEY'S FEES, ARISING OUT OF OR RESULTING FROM THE USE OF THIS CHART.

2. THIS CHART IS THE PROPERTY OF THE OFFICE OF COAST SURVEY, NATIONAL OCEANIC AND ATMOSPHERIC ADMINISTRATION, U.S. DEPARTMENT OF COMMERCE. IT IS LOANED TO YOU FOR YOUR CONVENIENCE AND IS NOT TO BE REPRODUCED OR TRANSMITTED IN ANY FORM OR BY ANY MEANS, ELECTRONIC OR MECHANICAL, INCLUDING PHOTOCOPYING, RECORDING, OR BY ANY INFORMATION STORAGE AND RETRIEVAL SYSTEM, WITHOUT THE EXPRESS WRITTEN PERMISSION OF THE OFFICE OF COAST SURVEY. THE USER ASSUMES ALL LIABILITY FOR THE USE OF THIS CHART. THE USER SHALL INDEMNIFY AND HOLD HARMLESS THE OFFICE OF COAST SURVEY FROM AND AGAINST ALL CLAIMS, DAMAGES, LOSSES, AND EXPENSES, INCLUDING REASONABLE ATTORNEY'S FEES, ARISING OUT OF OR RESULTING FROM THE USE OF THIS CHART.